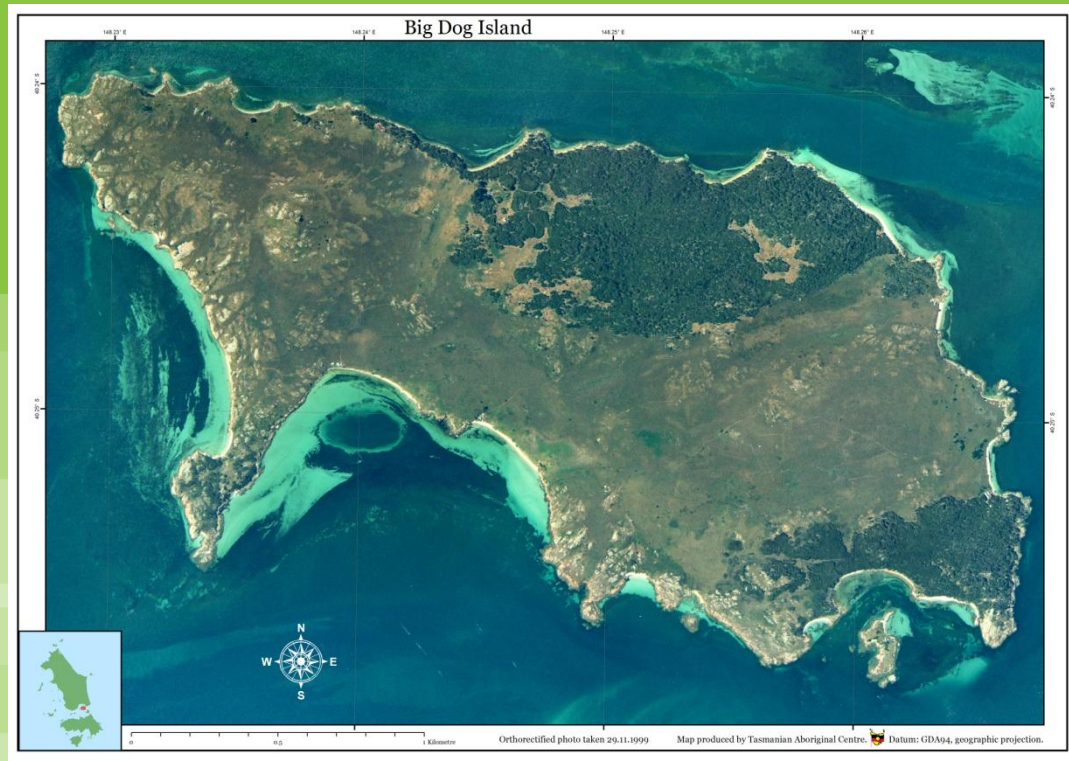


Big Dog Island

(Great Dog Island)



Ecological notes

Surveys: 27-28 August 2013

Shaun Thurstans



Primary Aims

Investigating potential habitat for

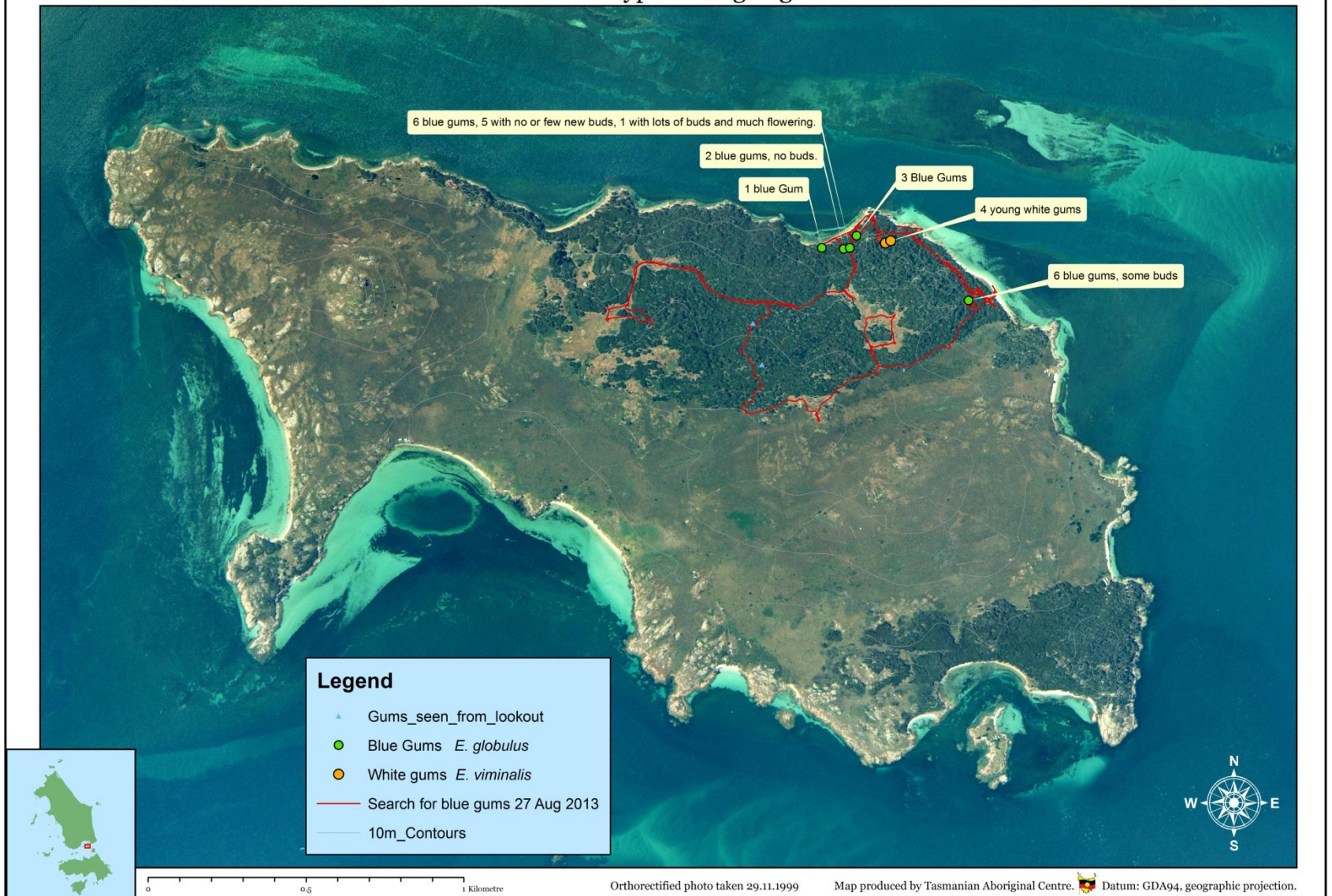
- Swift parrots &
- Forty Spotted pardalotes.

Consisting of:

- Blue gums (*Eucalyptus globulus*), Black or Swamp Gums (*E.ovata*) &
- White gums (*E. viminalis*)

Very few gum trees found

Eucalypts on Big dog



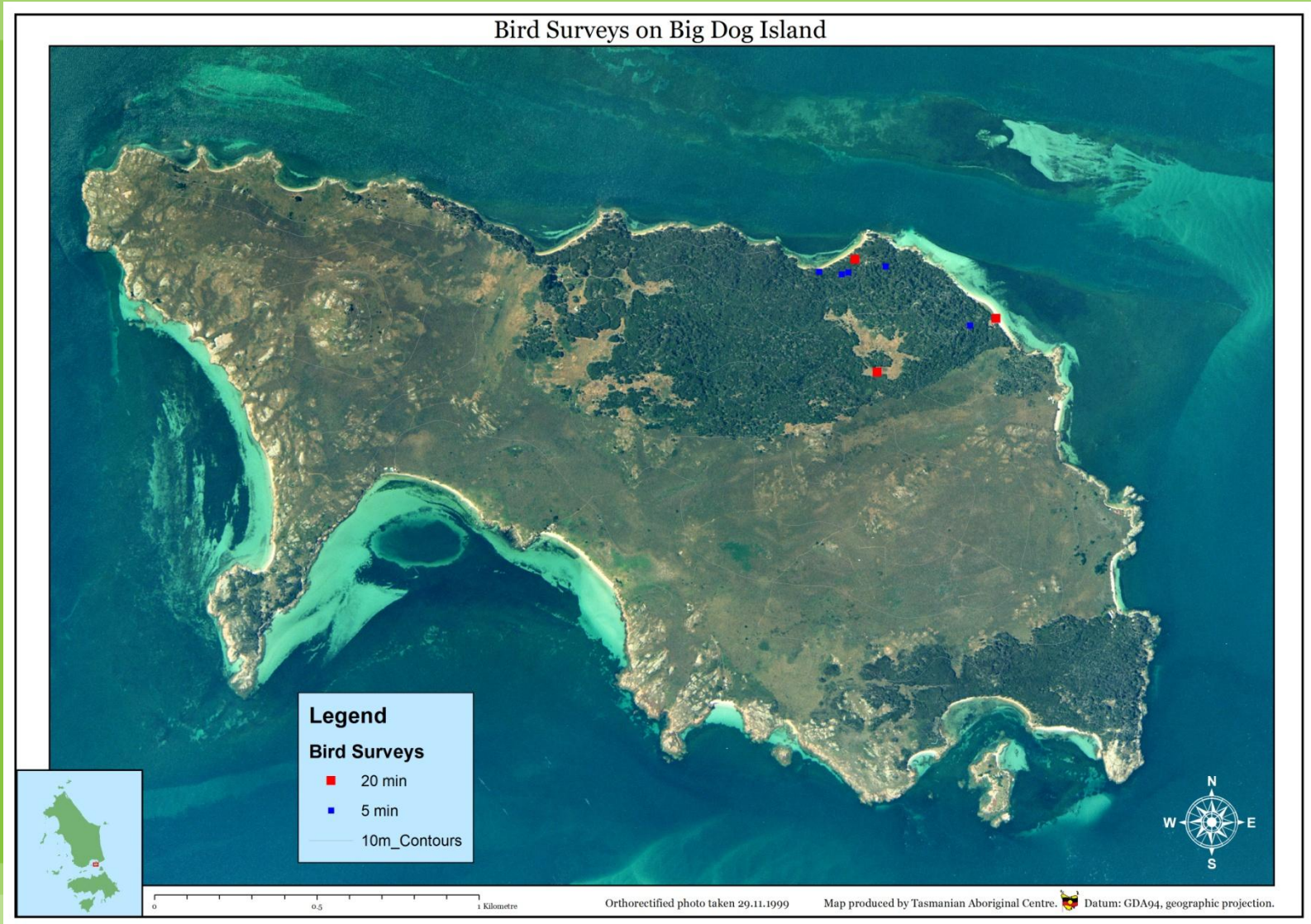
Very few gum trees found

- A search for gum trees was carried out. The map “Eucalypts on Big Dog” illustrates the gums located, with a small copse of three trees seen from the One Tree Hill lookout, but not found in the thick bush.
- With very few gums at all found, the importance of this island for swift parrots is very minor.
- Only four young white gums provide very little forty-spotted pardalote habitat.
- Historically, Big Dog Island was known as a base for boat building. This suggests there would have been more gums than are currently found, so the habitat potential may have been greater.



White gums
(*Eucalyptus viminalis*).

Bird surveys



Birds

3 x 20 minute surveys (entered into Birdlife Aust. bird atlas), species recorded:

Land: Brown Thornbill, Olive whistler (juvenile), European goldfinch, Tree martin, Crescent honeyeater, New Holland honeyeater, Yellow-throated honeyeater.

Water: Pacific gull (incl. juvenile), White-fronted tern, Pied cormorant, Pelican

5 x 5 minute surveys :

Confirmed absence of Swift parrots and Forty-spotted pardalotes. Info sent into DPIPW.

Other species seen:

Nankeen kestrel, White-bellied Sea eagle (juvenile), Brown Goshawk, Cape Barren Geese (eggs and chicks).

Other Signs:

- White bellied Sea eagle nest (fresh faecal matter indicating active). Location not shown, because they are very sensitive to human disturbance. Info sent into DPIPW.
- Pellet (pacific gull?)



June 2013 Fire

Looking South from One Tree Hill



June 2013 fire



Caterpillars - family ARCTIIDA, commonly called Woolly bear caterpillars. One that is listed as having Fireweed, *Senecio spp.* as a main food source is the Magpie moth, *Nyctemera amica*.

(Pers. Comm Laurie Miller)

Image: http://www.rbgsyd.nsw.gov.au/_data/assets/image/0006/76758/Nyctemera_amica_620.JPG



Miscellaneous

Miscellaneous



Orchids?



Deadly nightshade *Solanum nigrum*?
It is covering a lot of ground within the forest.



Muttonbird monitoring

- The TAC are working at re-establishing long term monitoring of the species on Big Dog, Babel and Chappell Islands.
- DPIPWE researchers are interested in reviving the late Irynej Skira's transects on Big Dog as a control site (companion site) for the nearby Fisher Island site, where they will continue monitoring and banding activities.



Muttonbird monitoring

Previous muttonbird monitoring transects



Old Aerial Photos

- The TAC has copies of old aerial photos for Big Dog Island (and Mount Chappell, Babel and Badger Islands). All are:
 - orthorectified (removing distortions arising from hills)
and
 - georectified (put into coordinate system).

Aerial photos of Big Dog Island



1951



0 0.5 1 Kilometre

Orthophoto: 9 Feb 1951 0220_510_or.tif



Map produced by Tasmanian Aboriginal Centre.

Aerial photos of Big Dog Island



1973



0 0.5 1 Kilometre

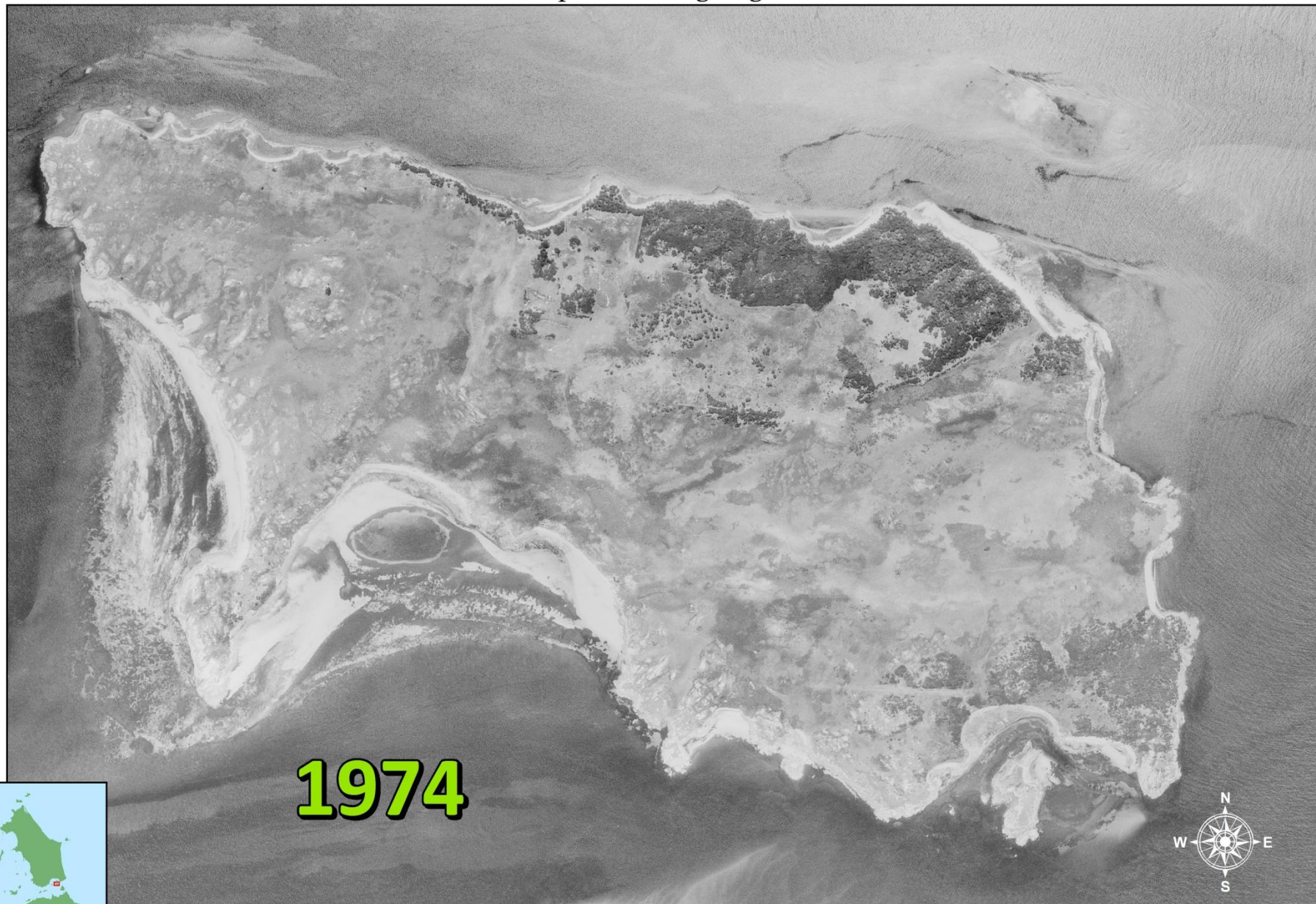
Orthophoto: 20 Jan 1973 0618_205_or.tif



Map produced by Tasmanian Aboriginal Centre.



Aerial photos of Big Dog Island



1974

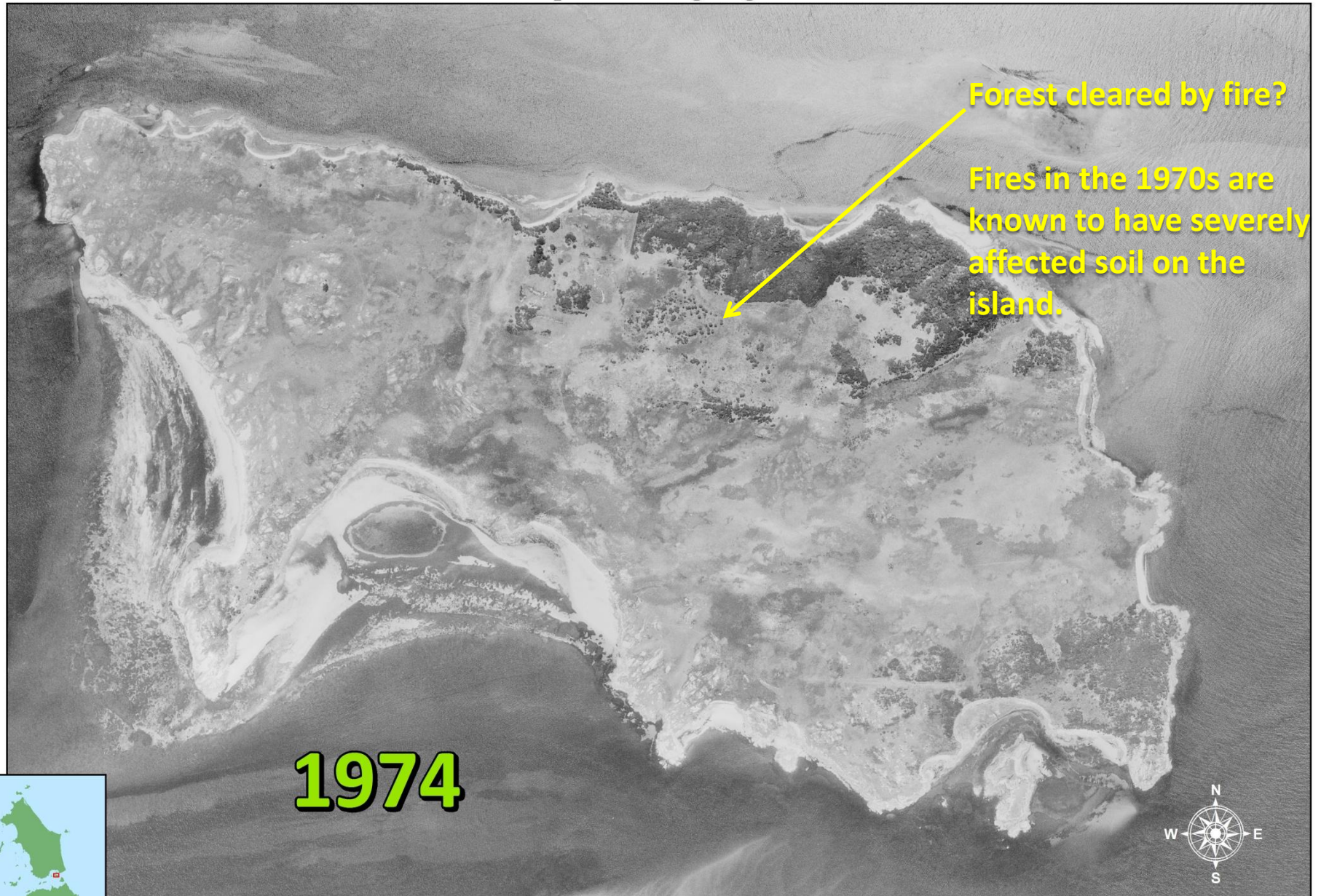
0 0.5 1 Kilometre

Orthophoto: 04 Feb 1974 0654_143_or.tif



Map produced by Tasmanian Aboriginal Centre.

Aerial photos of Big Dog Island



1974

Forest cleared by fire?

Fires in the 1970s are known to have severely affected soil on the island.



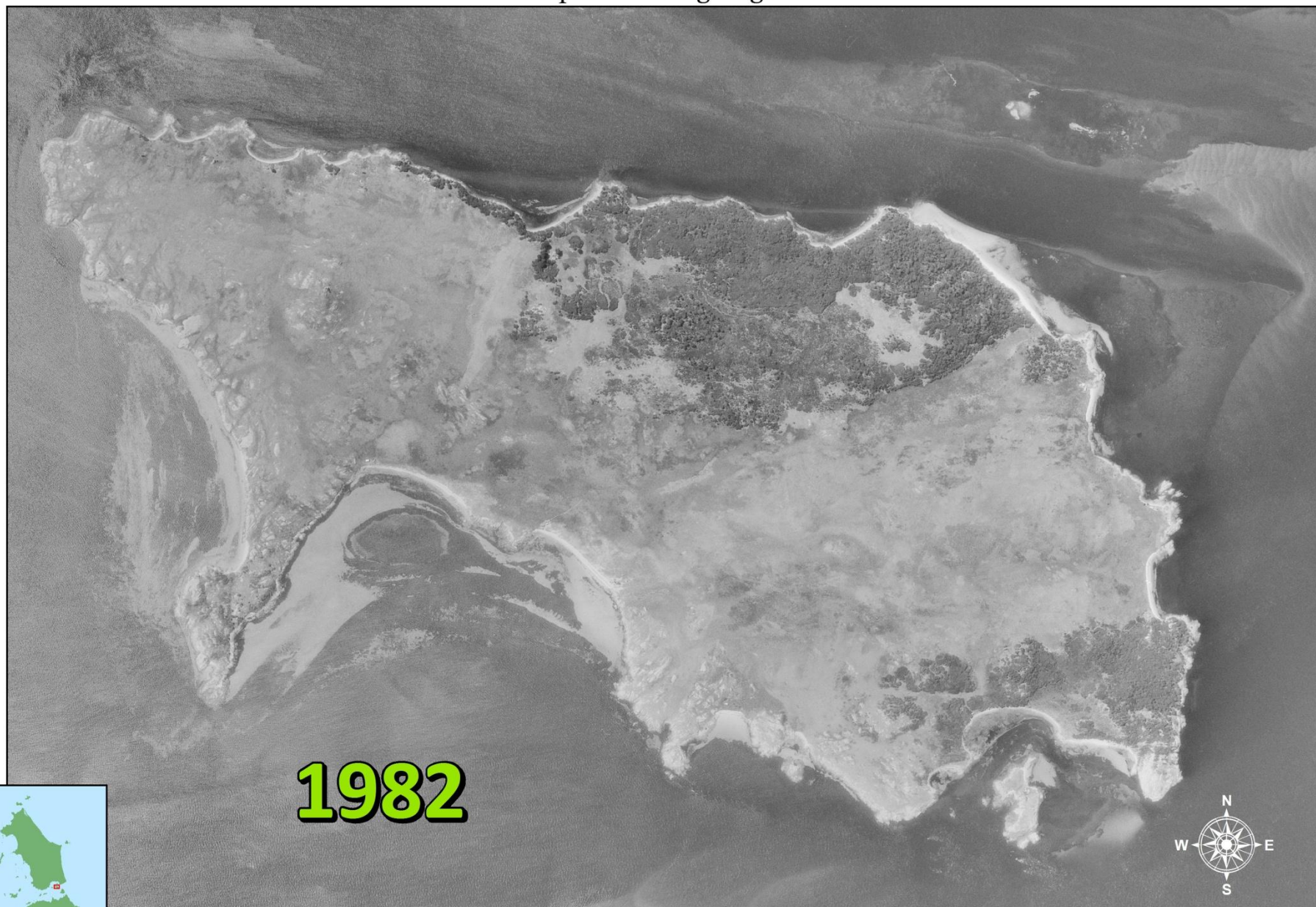
0 0.5 1 Kilometre

Orthophoto: 04 Feb 1974 0654_143_or.tif



Map produced by Tasmanian Aboriginal Centre.

Aerial photos of Big Dog Island



1982



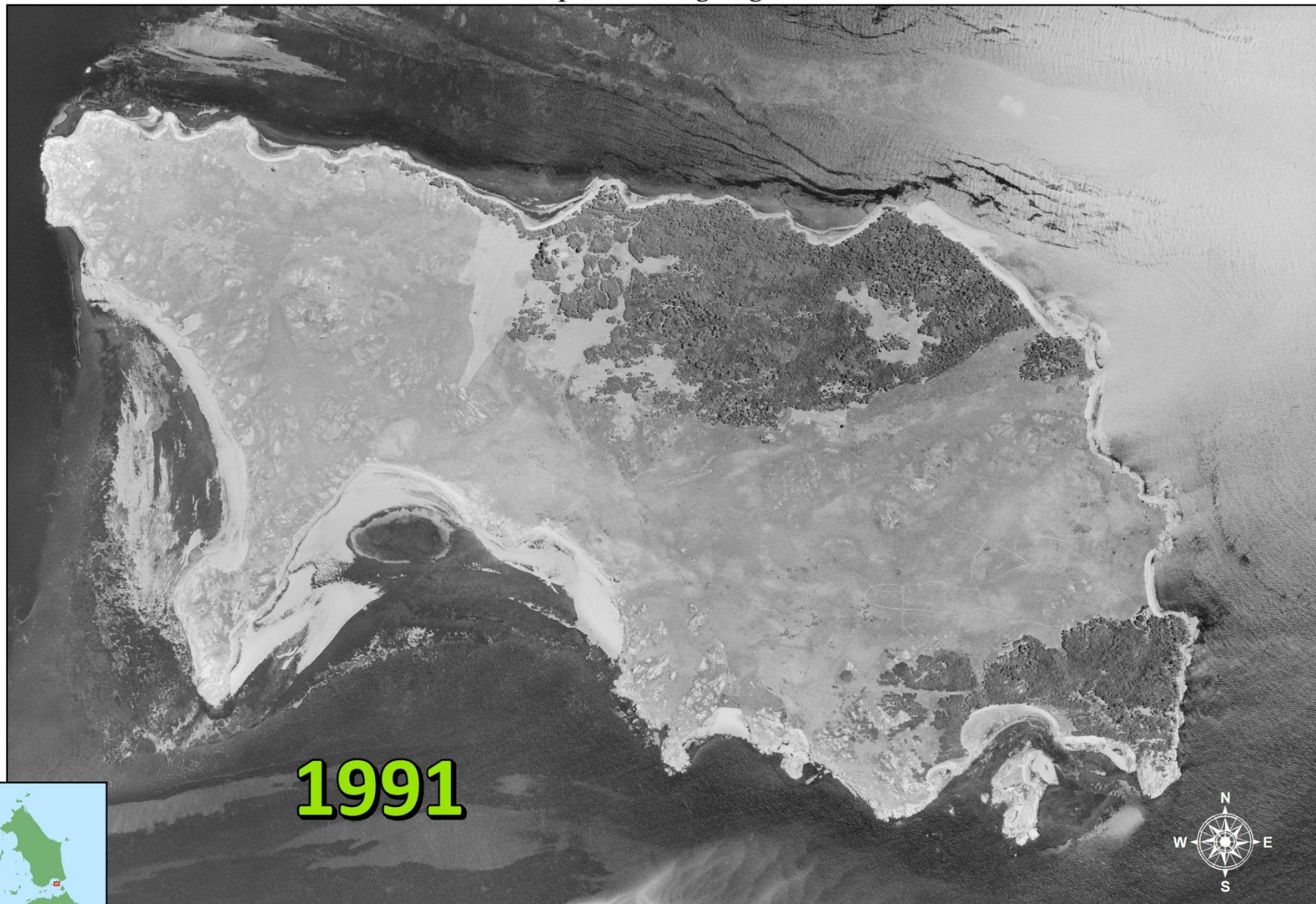
0 0.5 1 Kilometre

Orthophoto: 29 Jan 1982 0900_068_or.tif



Map produced by Tasmanian Aboriginal Centre.

Aerial photos of Big Dog Island



1991

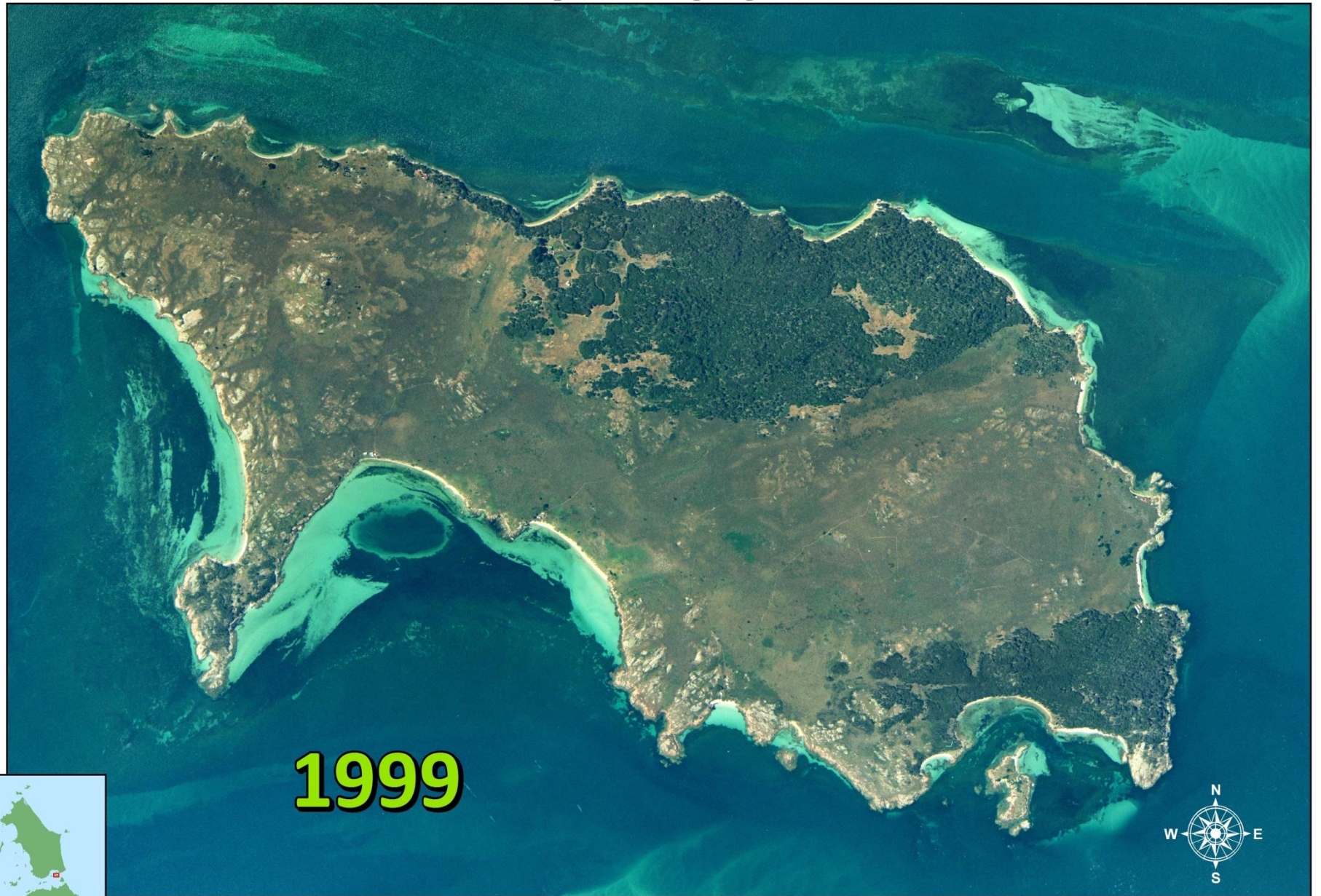
0 0.5 1 Kilometre

Orthophoto: 8 Jan 1991 1163_045_or.tif



Map produced by Tasmanian Aboriginal Centre.

Aerial photos of Big Dog Island



1999



0 0.5 1 Kilometre

Orthophoto: 29 Nov 1999 1319_194_or.tif



Map produced by Tasmanian Aboriginal Centre.



2005

814 m

Image © 2013 DigitalGlobe

Google earth

2005

Imagery Date: 9/13/2005 lat -40.247423° lon 148.248752° elev 33 m eye alt 3.52 km



Cape Barren Goose nest