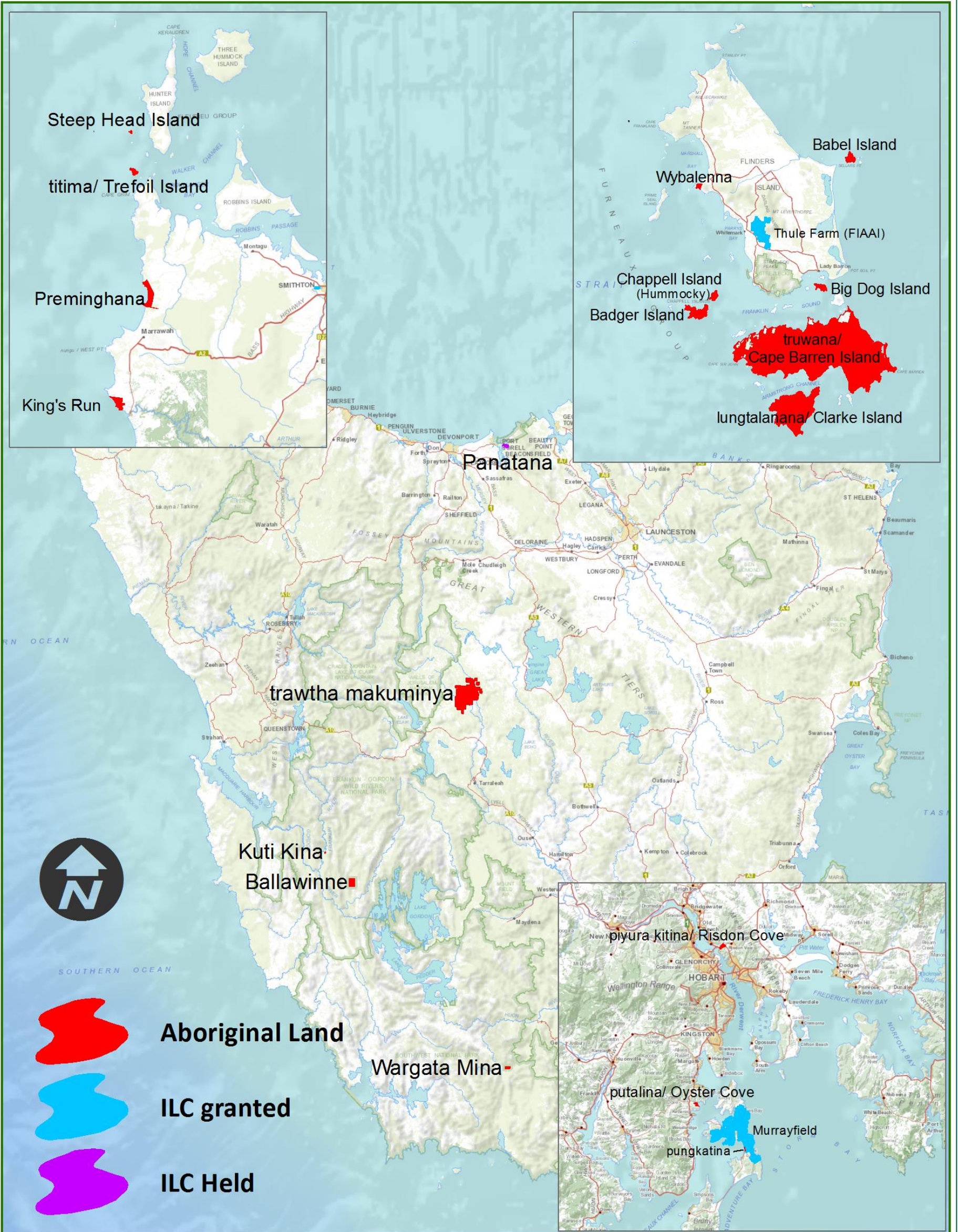


Aboriginal Land

July 2017

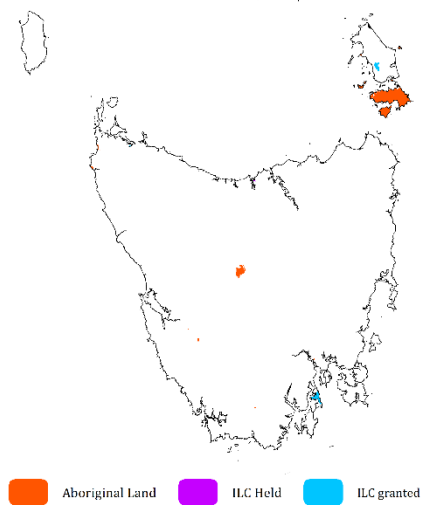


Data Sources
 TheLIST_parcel
 TAS_ILCHeldGrantedPropertyParcelCentroids
Base imagery:
 theLIST © State of Tasmania



Aboriginal Land

Less than 1% of lutruwita



Aboriginal Land#	Area (ha)	% of lutruwita*
pungkatina	8.43	0.0001%
Kuti Kina Cave	15.46	0.0002%
Steep Head Island	21.62	0.0003%
putalina/ Oyster Cove	37.98	0.0006%
Risdon Cove	78.94	0.0012%
titima/ Trefoil Island	115.79	0.0017%
Wybalenna	142.83	0.0021%
Wargata Mina Cave	154.35	0.0023%
Chappell Island	323.26	0.0047%
Kings Run	331.70	0.0048%
Big Dog Island	353.85	0.0052%
Babel Island	441.00	0.0064%
Preminghana	528.86	0.0077%
Ballawinne Cave	560.02	0.0082%
Badger Island	1242.65	0.0182%
trawtha makuminya (Gowan Brae)	6876.43	0.1005%
lungtalanana/ Clarke Island	8154.58	0.1192%
truwana/ Cape Barren Island	44481.12	0.6503%
Total	63,869 ha	0.93%

under the *Aboriginal Lands Act 1995*

* 6,840,100 ha = total area of Tasmania (incl. Islands) as defined by Geoscience Australia (<http://www.ga.gov.au>)

ILC held Land (not Aboriginal land#)	Area (ha)	% of lutruwita*
Rothesay Circle (Karadi)	0.49	0.0000%
Panatana (Six Rivers)	234.88	0.0034%
	235 ha	0.0034%

ILC granted land (not Aboriginal land#)	Area (ha)	% of lutruwita*
Thule (FIAAI).	2054.14	0.0300%
Murrayfield and Kirkby Lodge (Weetapoon)	4097.00	0.0599%
17 Mella Rd (CHAC)	6.07	0.0000%
	6,157 ha	0.09%

Other land and built real estate are privately owned by Aboriginal organisations (e.g. TALSC: Saltwater River, 40ha).

Sources:

TAS_ILCHeldGrantedPropertyParcelCentroids

list_parcel

<http://www.ilc.gov.au/Home/What-We-Do/Land-Purchased>

<http://www.ga.gov.au/scientific-topics/geographic-information/dimensions/area-of-australia-states-and-territories>



Tasmanian
Aboriginal
Corporation