

Big Dog Island

Big Dog Island Rookery Burns

This year, Aaron and Tim Maynard conducted maintenance burns on their rookery to keep it healthy for the future.



Shed Boss -Tim Maynard (middle) is being assisted by Bucky Brown and Brett Newall to burn off his rookery on Big Dog Is.



Hummocky Island



Hummocky Island Infrastructure Upgrades

Some much needed maintenance has occurred on Hummocky to improve the integrity and liveability of the crews living quarters. This included:

- A wood heater has been installed to warm up the living quarters.
- Gutter and roofing has been repaired to prevent damage by the elements.
- Workshop door was replaced so the workshop can now be used correctly.
- The corroded footings have been replaced and secured.
- The deteriorated shower bay was replaced.

tayaritja



Vessel Maintenance

Due to legislation changes in 2019, TAC vessels must now meet Australian Maritime Safety Authority survey requirements to operate within the tayaritja. This has required substantial upgrades to the vessels to meet these rules.

A fractured locating bolt causes the tractor forks to become misaligned on Hummocky



The drive shaft for the slasher on Hummocky is worn out



Equipment Failures

From hungry rodents to seized crankshafts, the land management staff face an array of equipment failures that they have to overcome on daily basis.



Fractures in Big Dog Island's slasher caused the failure of the gearbox.



Rodents ate their way through the electrical wiring on Badger Island

lungtalanana



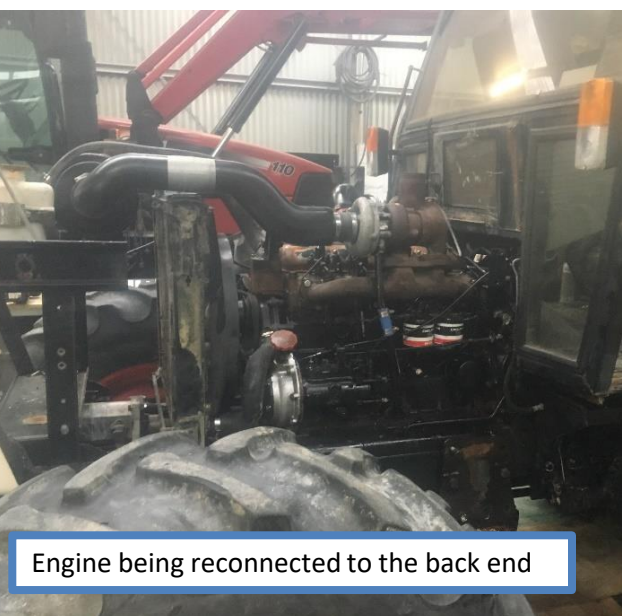
Front End - Engine being repaired



Back End - Awaiting engine repair

lungtalanana tractor

A hairline fracture in a sump allowed the oil to leak out of this tractor and consequently the engine seized. David Bailey and his crew have just finished repairs and the tractor should be heading over to lungtalanana very shortly.



Engine being reconnected to the back end



All back together - ready to go

Babel Island



Over the last year access to Babel Island has been difficult due to the changes in Maritime legislation. With assistance of Mick and Steele Mansell, the land management crew were able to get over to the island to clear and burn some boxthorn. During the stay they also helped Mick and Steele to dig up the septic overflow drums and replace them, and flatten out an area for a new water tank.



Badger Island



The land management crew completed some much needed maintenance on the graves sites.



It doesn't matter what Island you are on, machinery maintenance never stops.



Keeping the weeds down on the airstrip is important to keeping access to the island open.

Big Dog Island



When the weather has been good the crew have focused their efforts on eradicating mirror bush and maintaining tracks; however, when the weather has been bad they have focused on finishing off the Community homestead.



lungtalanana



After the wildfires on lungtalanana, the land management crew aim to reduce the fuel load and maintain the island with regular burns



wybalenna Historical Site



Land management crew are rendering and sealing the buildings to help preserve and protect them from the elements.



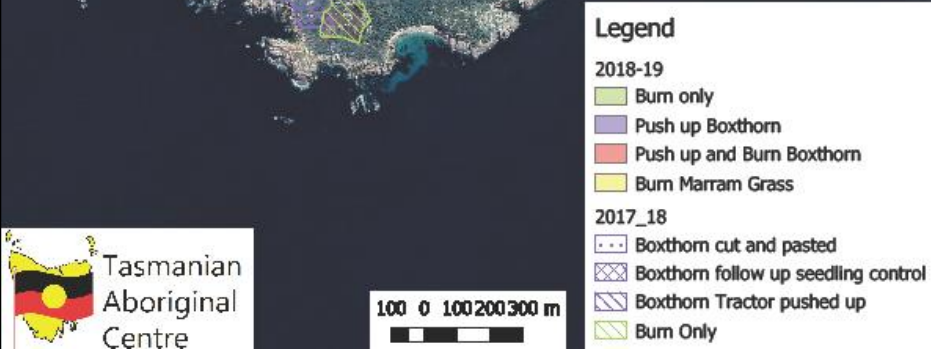
Hummocky Island



Chappell Island Weed Control 2017-19



From pushing up and burning boxthorn to replanting cunnigong and maintaining assets, the Hummocky crew are always busy.



preminghana

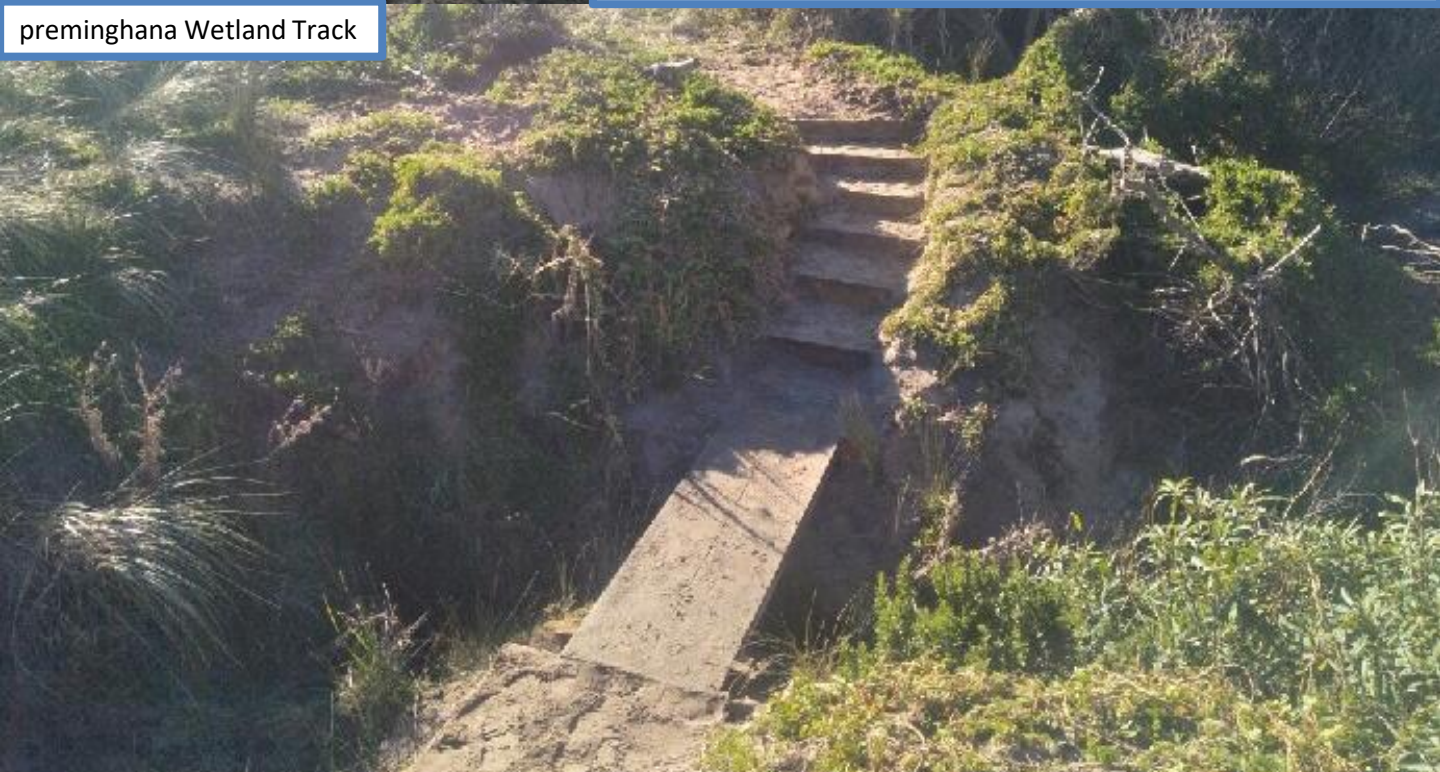


A good slow burn helps to keep the country healthy.



Upgrading drainage on the preminghana tracks helps to prevent erosion over the long term.

preminghana Wetland Track



preminghana



March 2019



March 2019 Shoreline

September 2019

Recent storm activity has eroded around 1 metre of the coastline exposing some previously hidden petroglyphs.



Kings Run

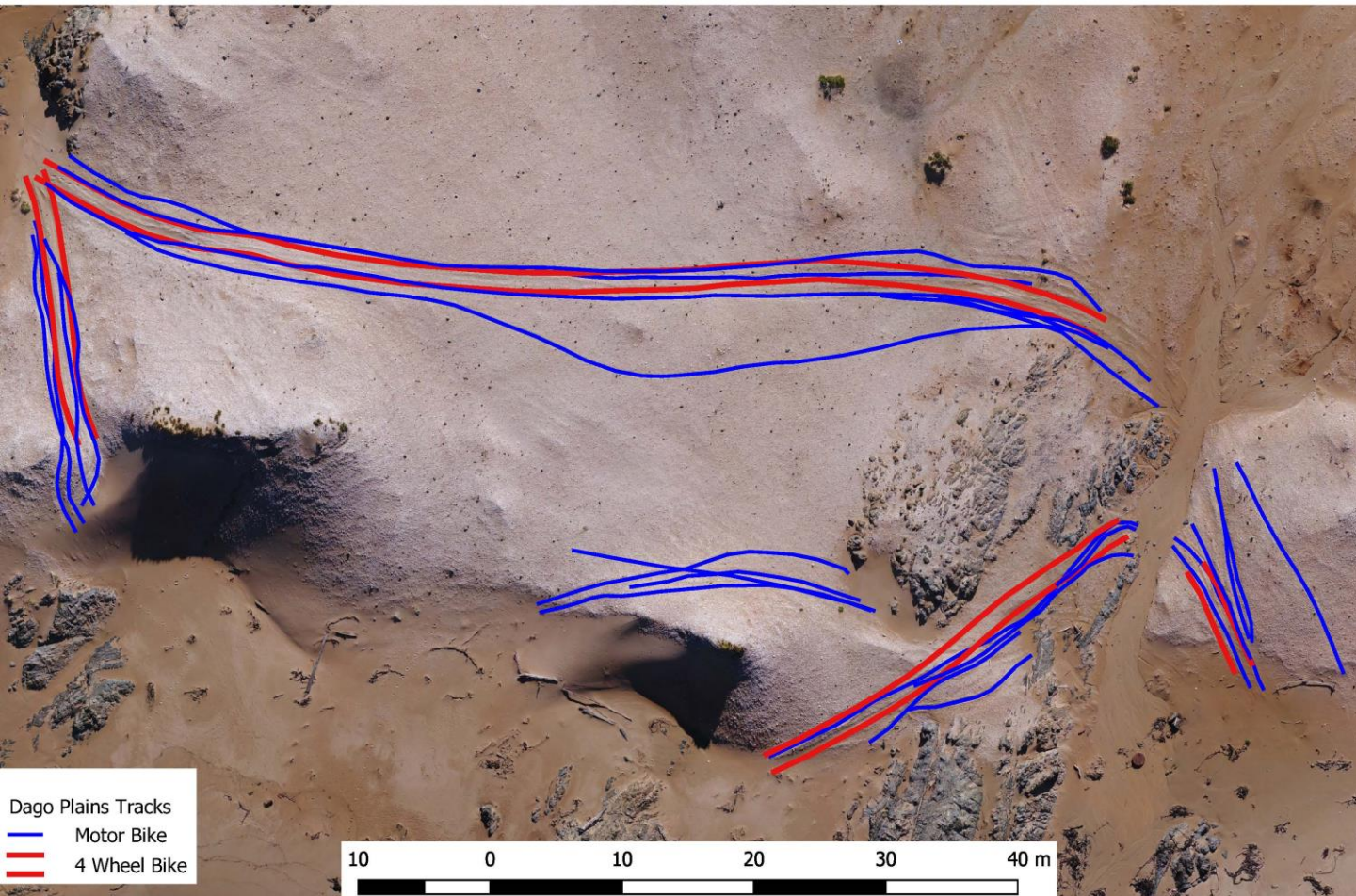


Clearing and maintaining track access to Kings Run has been a priority.



takayna

New Tracks at Dago Plains between September 2018 and May 2019



New vehicle tracks identified inside of the takayna restricted area.



Contacts:

Mark West:

mark.w@tacinc.com.au

nipaluna

03 62340700

Andry Sculthorpe:

andry.s@tacinc.com.au

piyura kitina/ Risdon Cove

0410 237 404