



TASMANIAN  
ABORIGINAL  
CENTRE

# ANNUAL REPORT 2020-2021



## WHO WE ARE

‘Our Aboriginal Ancestors owned and occupied lutruwita. We acknowledge our past and present warriors and our connection to country and sea.’

‘We are a strong community, identified through our family and family connections.’

## OUR VISION

A healthy, self-determined and respected Tasmanian Aboriginal Community

## OUR CENTRAL PURPOSE

To improve the circumstances and pursue the rights and interests of the Aboriginal community in Tasmania

## STRATEGIC PRIORITIES



*1. Strong, safe, resilient community*



*2. Land, heritage, and culture*



*3. Business and economic development*



*4. Strong, well-functioning TAC*



*5. External profile and influence*

# *The Year in Review*

## **Strong, safe, resilient community**

- An increase in the number of people using our services
- Expansion of health services closer to where more people live
- Employment for more Aboriginal people
- Emphasis on developing criteria for closing the gap in life outcomes
- Leading the debate on Aboriginal rights and issues

## **Land, heritage, and culture**

- Gifting of private land to our community
- Return of more ancestral remains
- Prominent use of our language in the public and commercial media
- Wider use of Aboriginal art themes in public spaces
- Provided more opportunities for Aboriginal community to be on cultural sites

## **Business and economic development**

- Increase in organisational income
- First year of operation of a TAC mutton bird shed
- Growth of income producing Cultural Awareness Program
- Continued operation of Palawa Kipli food business
- Training of Aboriginal people for varied employment

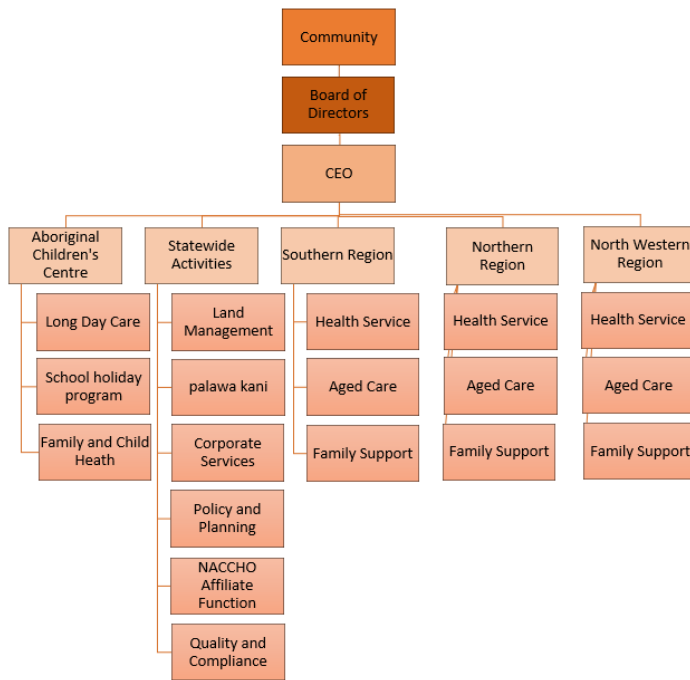
## **Strong, well-functioning TAC**

- Board meetings and AGM held in accordance with TAC Rule Book
- Expansion of clinics
- Employment of more Aboriginal people in the organisation
- Continued operations during the global pandemic without losing staff
- Expanded use of technology and digital media

## **External profile and influence**

- TAC is the Tasmanian member of the national Aboriginal Coalition of Peak Organisations, the Tasmanian Affiliate of NACCHO (National Aboriginal Community Controlled Organisation), the Affiliate member of the Tasmanian Aboriginal Health Forum together with State and Commonwealth Governments
- Frequent media interviews and articles
- Finally obtained government commitment to explore a Treaty in Lutruwita/Tasmania
- Negotiations for the purchase of a major coastal property
- More young Aboriginal people involved in the political process

## Our Organisation Chart



## Board of Directors

### Chairperson

Graeme Gardner

### Directors

Annette Peardon

Michael (Smokey) Beeton

Lucas Maynard

Leah Cameron

Graeme Gardener

### Branch delegate

South – Jillian Mundy

North – Darlene Mansell

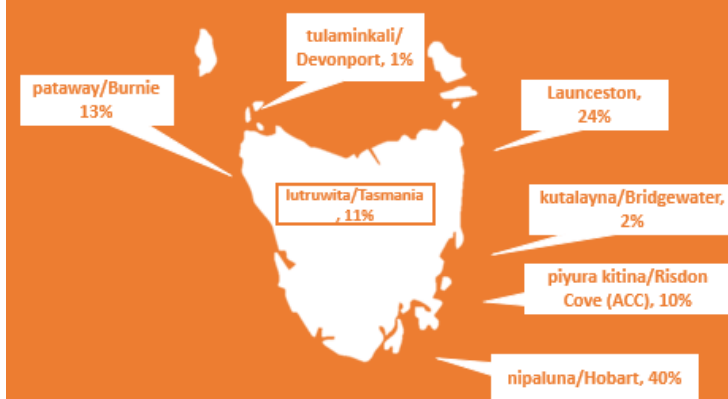
Northwest – Candy Edwards

## Our staff

We employ **162** staff  across the state

**52** staff  are full time, **78** are part time, **32** casuals

### LOCATION OF STAFF



### STAFF GENDER BREAKDOWN

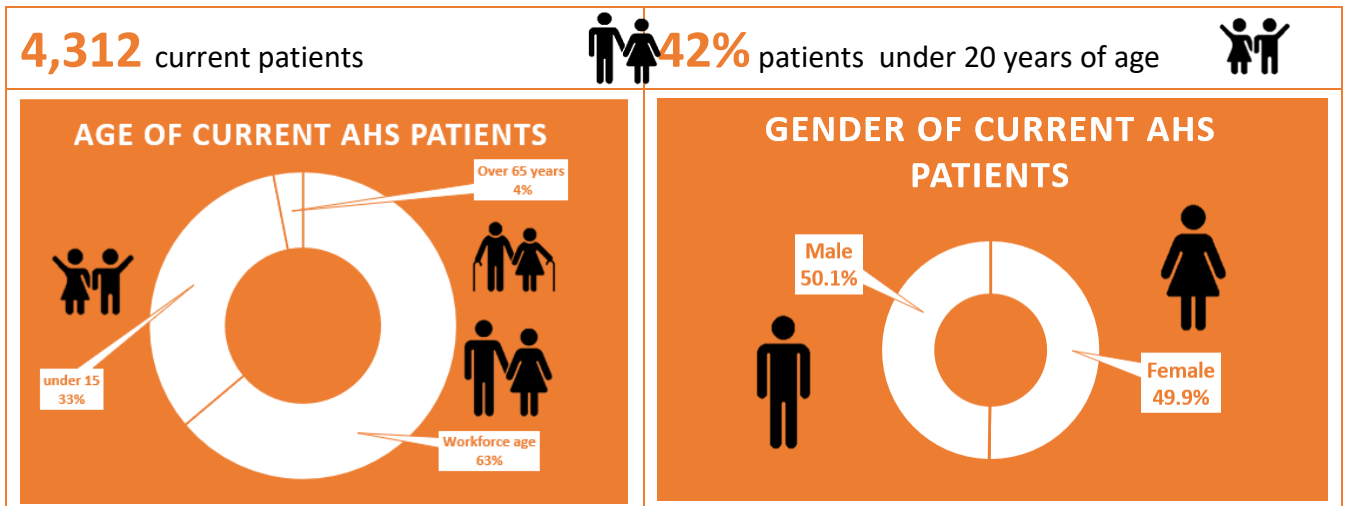









### PERCENTAGE OF ABORIGINAL & NON ABORIGINAL STAFF



# Health

Our Aboriginal Health Service provides a comprehensive suite of primary health care services to Aboriginal people throughout the state. Our health programs are designed to meet the needs of people of all ages and in all stages of health in our community.



<b>5</b> clinics  across the state
<b>52,048</b> episodes of care* 
*An episode of care is a contact between an individual client and service, with one or more staff, to provide health care within one calendar day. All contacts on the one day are treated as one episode of care
<b>17,850</b> GP  client contacts, <b>4.2%</b> increase
<b>342</b> diabetes educator contacts,  <b>110%</b> increase
<b>68%</b> of pregnant women  received their first antenatal check before 14 weeks
<b>76%</b> of adults over 55 years of age  received a Health Check (Item 715) in last two years
<b>14,796</b> nurse  client contacts, <b>40%</b> increase
<b>674</b> paediatrician client contacts, <b>43.5%</b> increase

## COVID-19 Vaccination Roll Out

TAC has implemented a robust vaccination strategy for the Tasmanian Aboriginal community. TAC vaccination planning and rollout has also occurred alongside the organisation’s active participation in the bodies overseeing the roll out. We were the only Aboriginal organisation accredited to administer the vaccinations around the State. The vaccine rollout began on the 12th April 2021 and the vaccination numbers have been growing, even though not as quickly as we would have liked. The introduction of more vaccination brands is likely to bring a substantial increase in vaccine coverage of our vulnerable community.

## Social Platforms

TAC ensures our community stays connected with news and community events, campaigns, programs, job and education opportunities, and each other.


**14,546** followers on TAC social media platforms and over **144k** views on our website

## Major TAC Campaigns


No cable car on kunanyi	Protect takayna
Treaty	Land return
Invasion Day	Protect tiralina/Eaglehawk Neck
Return of preminghana petroglyphs	Return of the TWWHA


## makara patapa/Quit Smoking

Makara patapa is a program driven and delivered by the Aboriginal Health Service to reduce the use of tobacco in the Aboriginal community. The project has achieved high levels of contact with smokers resulting in hundreds of conversations with smokers about their intentions to quit. It has provided support to people making and sustaining quit attempts.

**43%** of **382** current smokers contacted  since November

**58%** of the clients are women 


**52** quit attempts made in 8 months 

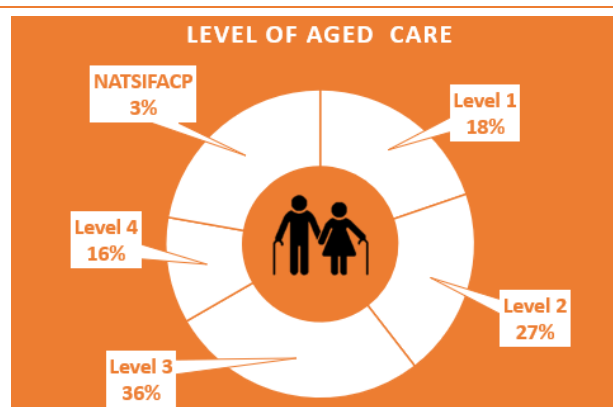
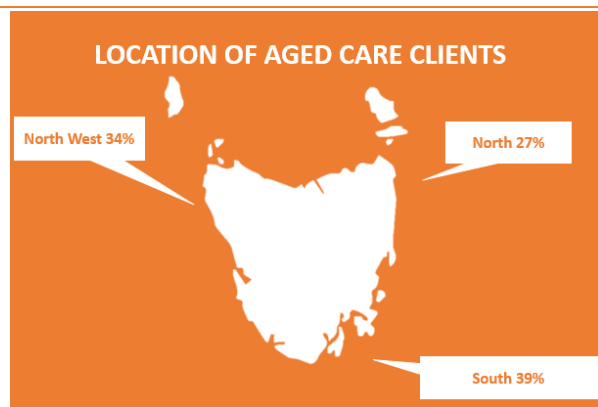
**41%** of the smokers contacted are over 40 years of age 

## Aged Care Program


The Aged Care Program is a provider of the Commonwealth Government's National Aboriginal and Torres Strait Islander Flexible Aged Care Program (NATSIFACP) and the Home Care Packages. This year we have seen many clients move to receiving individualised care under the Home Care Package Program.

**77** members of our community  supported to live independently


**79%** of Aged Care clients are women 




## Training Services

**693**  people undertook training across **87** training events with **25** of these being accredited training courses


**5**  staff began training in Certificate IV in Training and Assessment with **9** completing currently

Over **90%** of training was delivered in Tasmania 

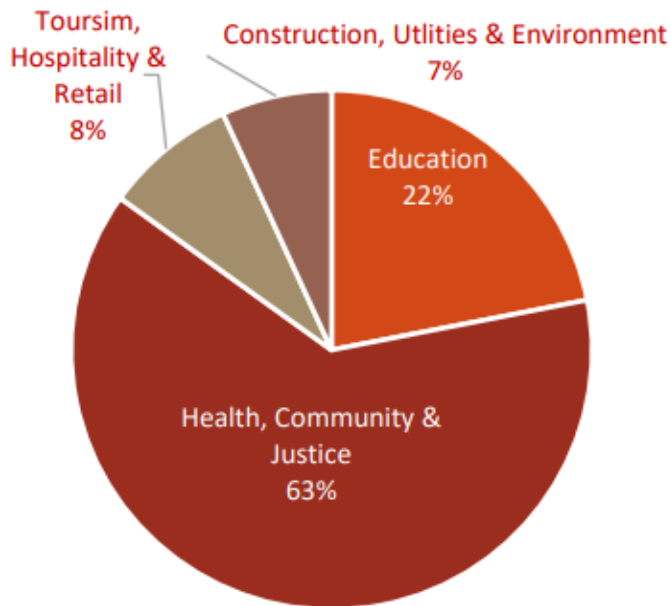
**25%**  more staff received training this year

**28%** of training was accredited/recognised 

## Cultural Awareness Training







**1772** people in **77** courses delivered across the state undertook required and/or developmental training opportunities. 

**97%** feedback from sessions received “good to very good”  ratings



## Aboriginal Children’s Centre – piyura kitina (Risdon Cove)

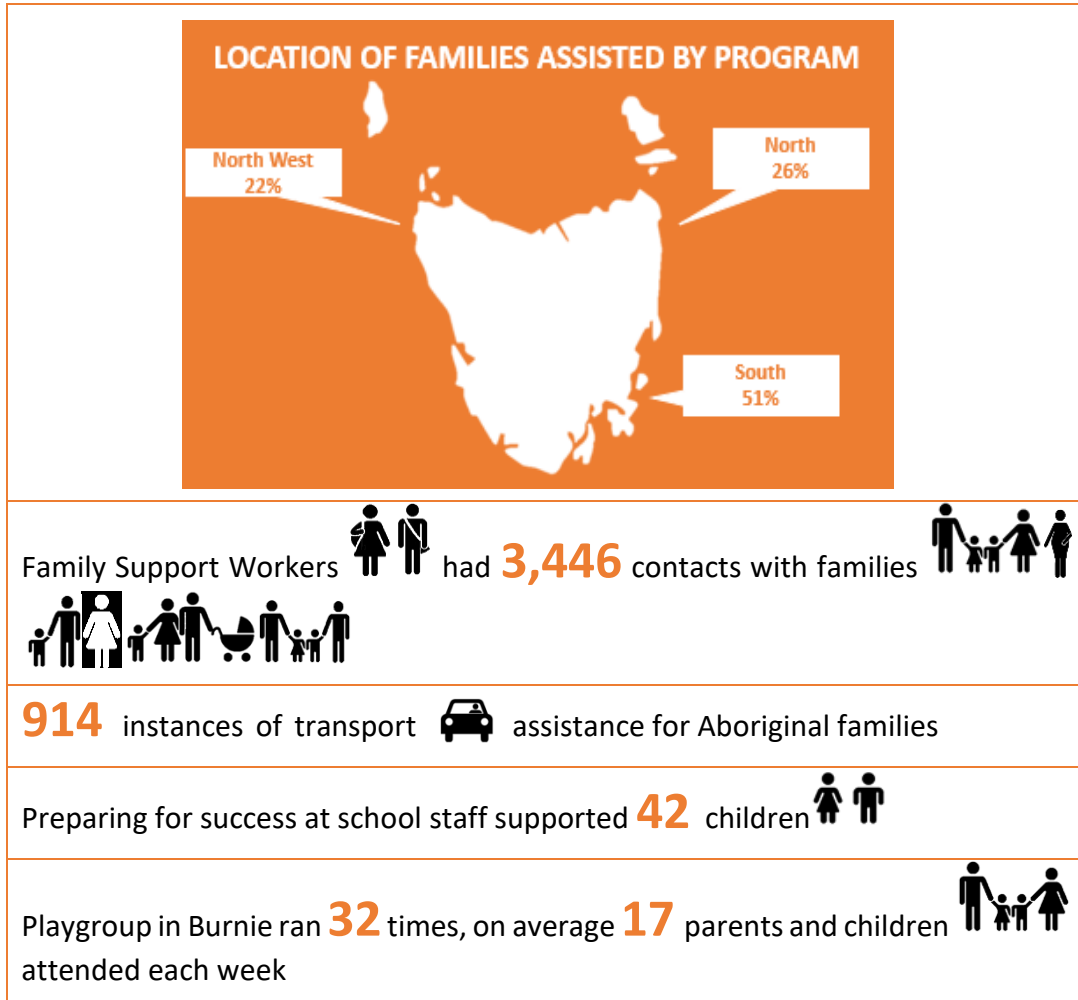
The Aboriginal Children’s Centre is a childcare subsidy approved childcare centre in Southern Tasmania. The Aboriginal Children’s Centre remains focused on connecting children with country and ensuring the children are immersed in culture daily.

ABORIGINAL CHILDREN’S CENTRE LICENCED PLACES				Care runs daily in three rooms for <b>27</b> children 
4  Nursery	5  Toddler room	20  3 to 5 Years room	25  Vacation Care	Most rooms are consistently filled, with the 3 to 5-year-old room averaging <b>24</b> participants. 
				There are <b>24</b> on the waitlist for Nursery, Toddlers and 3-5 years room



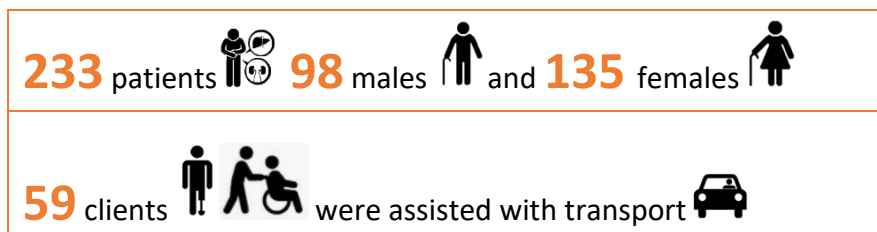
## Family Support

Our community support team offers a range of services to Aboriginal families throughout Lutruwita/Tasmania.









## Integrated Team Care ITC

The Integrated Team Care (ITC) program provides care coordination to help community members who have chronic health conditions. We support patients with better access to health specialists as well as providing access to resources that normally would be inaccessible due to cost or wait-list times.






## rana, payngana, paliti rrala

A priority of the rana, payngana, paliti, rrala (Strong in body, mind and spirit) has been ensuring the emotional and social wellbeing of the clients is nurtured and trauma was not exacerbated by the impact of COVID-19 suppression measures. Significant resources have been attributed to identifying mental health indicators as it relates to the community's recovery from COVID-19. TAC worked to ensure that service provision was informed by holistic wellbeing considerations. Fostering community connection, agency, self-determination, and sense of belonging was elevated to support the Aboriginal community during lockdown periods.

<b>1,780</b> counselling sessions 	<b>10</b> community commemorative  , celebratory  & educational events 
<b>101</b> group & community events 	<b>426</b> participants 

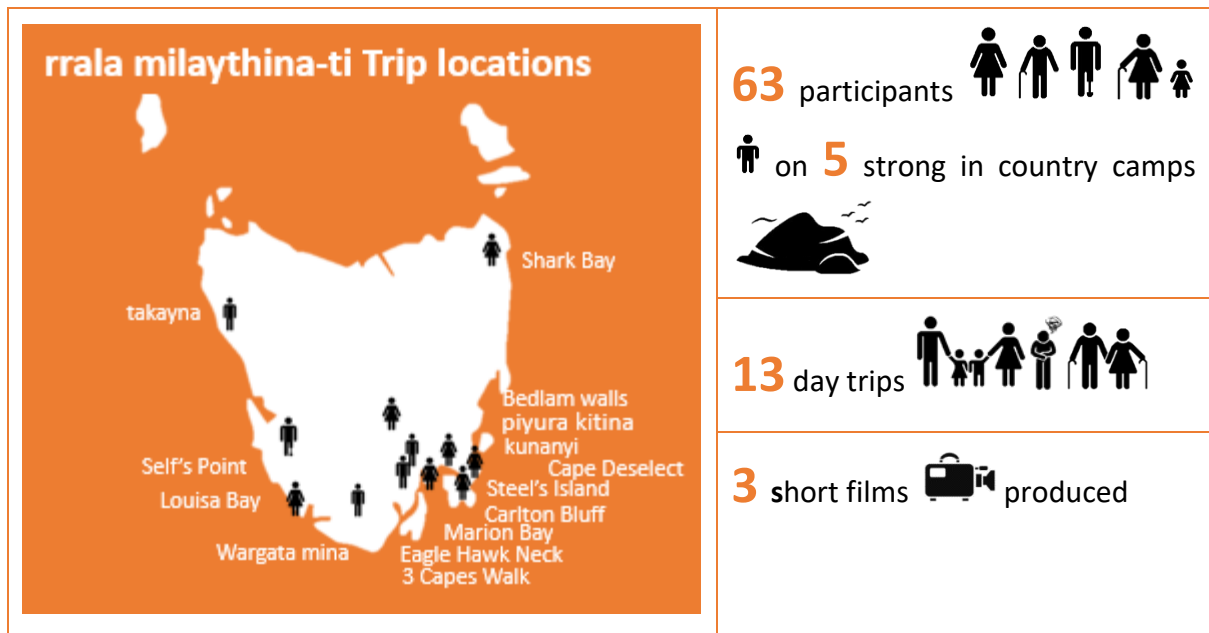
## takamuna pakana

The takamuna pakana program continues to facilitate physical and psychological health through the provision of assistance for Aboriginal community members to engage in sporting and recreational activities.

<b>159</b> participants 	<b>41%</b> participants engaged in ball sports 
<b>8</b> elite <b>athletes</b> (AFL, basketball, swimming, BMX, athletics & karate) 	

## rrala milaythina-ti (Strong in Country) project
























rrala milaythina-ti project assisted Aboriginal community members to spend time on milaythina (country) around the state. Community were provided with opportunities to connect with milaythina to improve their social, emotional and spiritual wellbeing.



## Land management





TAC has land management crews across Lutruwita/Tasmania, including on the West Coast, the Furneaux Islands and in the south. Much of the work is weed eradication, with infrastructure maintenance and heritage protection the other important tasks.

<b>10,650</b> hectares of land managed	<b>4</b> land management crews	<b>12</b> Indigenous rangers
Badger Island	lungtalanana	Chappell Island/Hummocky
Cultural and Heritage cyclical maintenance plans completed	<b>23.41</b> hectares burned	<b>55.34</b> hectares of boxthorn  pushed up and burned
<b>5.62</b> hectares within the fenced area of airstrip maintained	<b>1</b> isolated spots of gorse treated	<b>5.32</b> hectares of slashing  for the runway
<b>2</b> isolated spots of boxthorn treated	<b>47.5</b> kilometres of tracks slashed	<b>3.7</b> km of tracks  maintained and cleared
	<b>3.2</b> hectares of slashing for the runway	Cultural and Heritage site report completed, and an annual inspection plan established.

 piyura kitina		 putalina		 Preminghana	
8 areas of periwinkle  , bridal creeper  and boneseed  treated		30 hectares of land protected from pine tree infestation		30.8 hectares of gorse  sprayed	
1.56 hectares of isolated burns  conducted		 trawtha makuminya		1.79 hectares of gorse  mulched	
13.79 hectares of land slashed  over the year.		39.5 hectares burned 		39.5 hectares burned 	
 Kings Run					
1.2 km tracks  improved					
 Babel Island					
Mutton bird monitoring survey completed			2.56 hectares of boxthorn  burned 		
Culvert pipe installed due to erosion					
 Big Dog Island					
17.4 km tracks  slashed and cleared			16 incidents of boxthorn  treated		
25.63 hectares burned  in partnership with shed bosses			42 incidents of mirror bush  treated.		
Mutton bird monitoring survey completed, including one shed boss and aboriginal community members					


## palawa kani

Our language team continued their efforts in reviving our language and sharing their knowledge with community members.

52 words revived and added to the palawa kani database 	361 incidents of Aboriginal staff  training in palawa kani
12 non-Aboriginal people  working with Aboriginal families  trained in palawa kani	

**202** requests from the public to use palawa kani approved including **51** from schools, universities and early childhood centres

**460** people from pre-schoolers  to elders  participated in palawa kani activities across the state, including on Truwana/Cape Barren Island.

**10** Information sessions  on the background to palawa kani presented to the Deputy Premier/Minister of Education; the Minister of Aboriginal Affairs; George Town and Burnie Councils, Launceston Council staff and consultants; Campbell Town Bicentenary Committee; Children’s Commissioner’s Office; UTAS Riawunna Centre; CSIRO.

## Partnerships

We work closely with many other organisations to achieve our goals. Some of our partner organisations included:

Alcohol, Tobacco and Other Drugs Council Tasmania
Tobacco Coalition
Quit Tasmania
Salvation Army Bridge Program
Second Bite
Bob Brown Foundation
Tasmanian Council of Social Services
Environmental Defenders Office
Connected Beginnings, Bridgewater
Arts Tasmania
General Practice Training Tasmania
Children’s Commissioner
Tasmanian Wilderness Society
Tasmanian Land Conservancy
Closing the Gap Partners
National Aboriginal Community Controlled Health Organisation and Affiliates

# Financial Report 2020/2021

## Income and Expenditure Statement

Income	
Grants	12,776,431
Gain on the Disposal of Assets	0
Fees & Other Income	4,511,964
Interest	64,035
<b>Total Income</b>	<b>\$17,352,430</b>
Expenditure	
Salaries and Employment Costs	11,066,231
Travel	402,192
Vehicle Costs	488,276
Resources, Materials, Supplies	1,102,361
Professional & Consultancy Costs	1,294,466
Miscellaneous Program Expenses	52,710
Utilities	601,039
Repairs & Maintenance	202,985
Insurances	141,287
Depreciation for the Year	325,141
Loss on Revaluation of Assets	0
<b>Total Expenditure</b>	<b>\$15,676,688</b>

Asset Revaluation Reserve Movement			
Revaluation Increments			0
Revaluation Decrements			0
<b>Total Asset Revaluation Movement</b>			<b>\$1,627,651</b>

<b>Total Comprehensive Income</b>	<b>\$1,675,742</b>
-----------------------------------	--------------------

## Balance Sheet

Assets	
Current Assets	18,214,911
Non-current Assets	16,251,410
<b>Total Assets</b>	<b>\$34,466,474</b>
Liabilities	
Current Liabilities	4,845,467
Non-current Liabilities	466,527
<b>Total Liabilities</b>	<b>\$5,311,994</b>

**TOTAL INCOME**  
\$17,352,430

**TOTAL EXPENDITURE**  
\$15,676,688

**NET INCOME**  
\$1,675,742

